

# Winchester

Rich, rustic elegance describes this leather from India that is dressed with wax and oil, then milled and polished. This leather's burnished, polished surface is complemented by a velvety texture that will become more visually appealing with age and with wear. Winchester is prized by designers, due to its ability to be tailored beautifully on a variety of frames.

## FEATURES

- Combination wax/oil tannage
- Polished surface
- Milled for extra softness
- Luxurious tracking effect

## AVG. HIDE SIZE

35-40 sq ft

## AVG. THICKNESS

1-1.2 mm

## COUNTRY OF ORIGIN

India

## TANNAGE

Chrome

## FINISH

Aniline Plus

## CHARACTER

Naturally Milled

## GRAIN

Full Grain

## HIDE TYPE

Buffalo

## CONFIGURATION

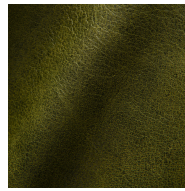
Whole Hide

## TESTING

CA-117, ASTM D 4157, AATCC 8 Wet/Dry  
Crocking



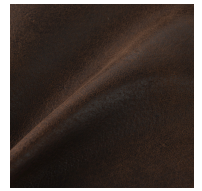
Sandstone



Fir



Chimney



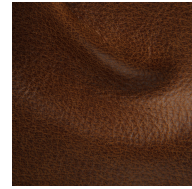
Coffee Bean



Pewter



Onyx



Sycamore



Buff



Dove



Nut



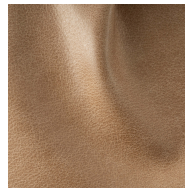
Flamenco



Tide



Pacific



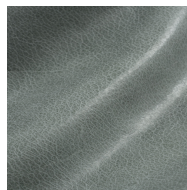
Beige



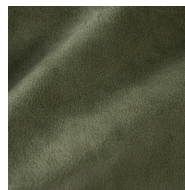
Mahogany



Thunder



Storm



Balsam



Sienna