



LEATHER SINCE 1933

Style Point

Style Point is an intricate and delicate transfer pattern that resembles the geometric shape of early European lace. This is an ornate transfer that adds a soft, glamorous and modern touch to any base color. This is made to order. Production time is 2-3 weeks. Samples are stocked in limited quantity and may not be immediately available.

FEATURES

- Diamond pattern applied to suede
- Soft surface with elements of dimension

COUNTRY OF ORIGIN

Spain

TANNAGE

Chrome

FINISH

Suede

CHARACTER

Suede

GRAIN

Split

HIDE TYPE

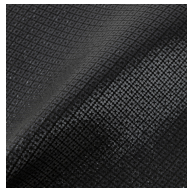
Bovine

CONFIGURATION

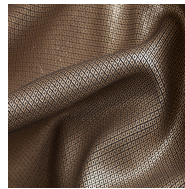
Double Butt

TESTING

CA-117, NFPA-260



Black Black Pearl



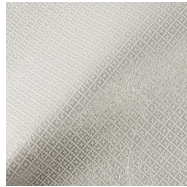
Blue Moon Rose Gold



Cream White



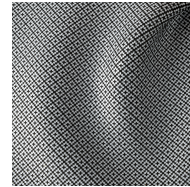
Cream Platinum



Cream Silver Matte



Stormy Silver Matte



Black White