



Sonnet

Sonnet is a semi-aniline leather that balances refined beauty with practical sophistication. Lightly polished to a subtle luster and naturally milled for softness, it mirrors the fine texture of calfskin without the delicacy. Its pliable hand makes it a favorite among upholsterers—draping cleanly and finishing beautifully across everything from tailored, modern silhouettes to timeless, traditional frames. Smooth to the touch yet quietly resilient, Sonnet embodies understated luxury made to last.

FEATURES

- Lightly polished surface
- Naturally milled
- Smooth and pliable hand
- Durable yet refined
- Resilient surface
- Soft Elegant appearance
- Timeless and enduring

AVG. HIDE SIZE

55 SF

AVG. THICKNESS

1.0 - 1.2 MM

COUNTRY OF ORIGIN

Italy

TANNAGE

Chrome

FINISH

Semi-Aniline

CHARACTER

Smooth

GRAIN

Corrected

HIDE TYPE

Bovine

CONFIGURATION

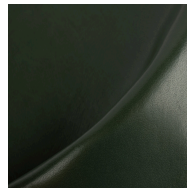
Whole Hide

CERTIFICATIONS

Declare Red List Free



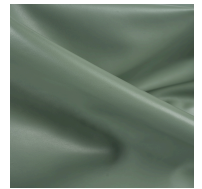
Toffee



Emerald



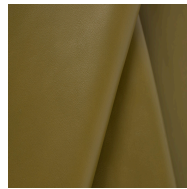
Mustang



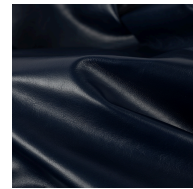
Rainforest



Covert Green



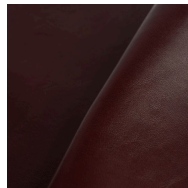
Avocado



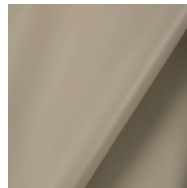
Larkspur



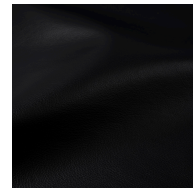
Butterscotch



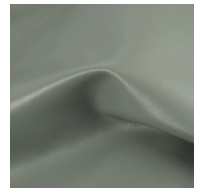
Pomegranate



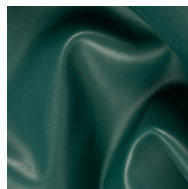
Light Grey



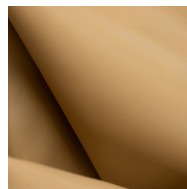
Black



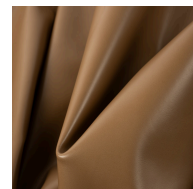
Storm



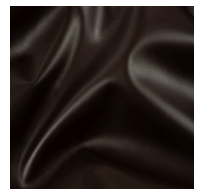
Peacock



Sahara



Mocha



Seal Brown



Linen