



LEATHER SINCE 1933

# Plait

The Plait collection was designed to emulate the appearance of a basket weave through embossing. Whether applied on leather or suede, this braided pattern creates depth wherever it's applied. View Plate Diagram

## FEATURES

- Woven appearance
- Applicable on leathers, nubucks, and suedes

## COUNTRY OF ORIGIN

Italy; Spain

## TANNAGE

Chrome

## FINISH

Suede

## CHARACTER

Naturally Milled; Suede

## GRAIN

Full Grain; Split

## HIDE TYPE

Bovine

## CONFIGURATION

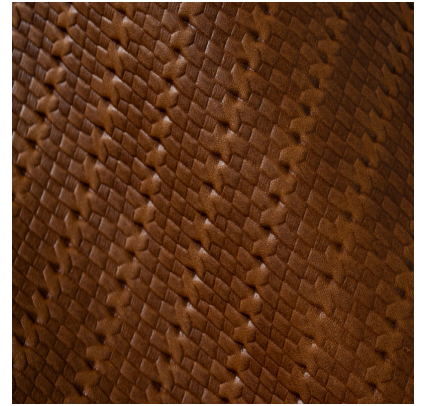
Whole Hide; Double Butt

## TESTING

Contact Customer Care



Satin Suede Smoke



Ellis Cypress