



LEATHER SINCE 1933

# Modern Ionic

A luxurious suede from the finest suede tannery located in Valencia, Spain. The leather goes through a treatment in the tanning process, which imparts water repellency properties from face to front for better and easier maintainability. A unique transfer process is applied to the leather with heat and pressure to create a small scale modern interpretation of ionic columns while maintaining the beautiful properties of the suede. This is made to order. Production time is 2-3 weeks. Samples are stocked in limited quantity and may not be immediately available.

## FEATURES

- Rich, saturated color with water repellent tannage
- Luxurious short nap
- Small scale modern interpretation of ionic columns

## COUNTRY OF ORIGIN

Spain

## TANNAGE

Chrome

## FINISH

Suede

## CHARACTER

Suede

## GRAIN

Split

## HIDE TYPE

Bovine

## CONFIGURATION

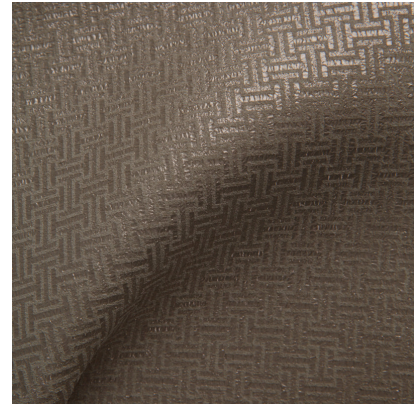
Double Butt

## TESTING

Upon Request Only



Cream Hammered Silver



Cream Taupe Pearl



Iron Hammered Silver



Stormy Hammered Silver