



LEATHER SINCE 1933

Moccasin Point

Our Moccasin Point Collection features an intricate metallic dot pattern on our Satin Suede base. This dynamic pattern creates a stunning visual effect on the suede's soft surface, injecting elements of dimension and texture that accentuate the leather's tactile qualities and luxurious nap. The end result is a leather with enhanced durability that draws you in with its lavish glamour and modern elegance. This is made to order. Production time is 2-3 weeks. Samples are stocked in limited quantity and may not be immediately available.

FEATURES

- Transfer pattern on a drapery aniline suede

COUNTRY OF ORIGIN

Spain

TANNAGE

Chrome

FINISH

Suede

CHARACTER

Suede

GRAIN

Split

HIDE TYPE

Bovine

CONFIGURATION

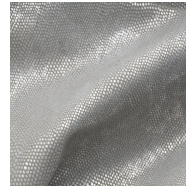
Double Butt

TESTING

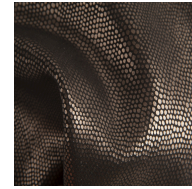
NFPA-260



Cream Taupe Pearl



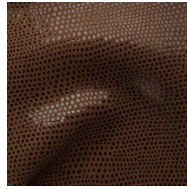
Stormy Hammered Silver



Black Anthracite Matte



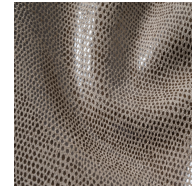
Cream



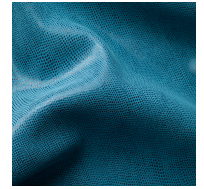
Saddle



Stormy Copper Pearl



Smoke Glaze



Pacific



Cream Hammered Silver