



LEATHER SINCE 1933

# Manta Ray

Manta Ray is a new interpretation of Shagreen with a bolder, more visual texture. This leather's surprisingly soft, velvety surface and "so now" exotic sexiness further enhance its appeal. This is made to order. Production time is 2-3 weeks. Samples are stocked in limited quantity and may not be immediately available.

## FEATURES

- Suede transfer pattern
- Exotic stingray detail

## COUNTRY OF ORIGIN

Spain

## TANNAGE

Chrome

## FINISH

Suede

## CHARACTER

Suede

## GRAIN

Split

## HIDE TYPE

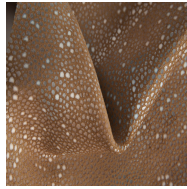
Bovine

## CONFIGURATION

Double Butt

## TESTING

CA-117



Umber



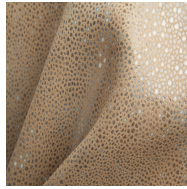
Glamour Blue



Black Bronze



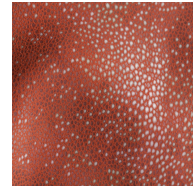
Glamour Green



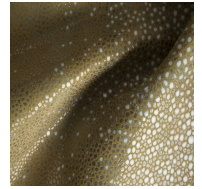
Taupe



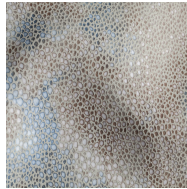
Cream



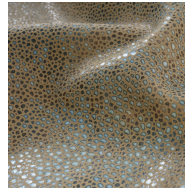
Flame



Pistache



Sky Blue



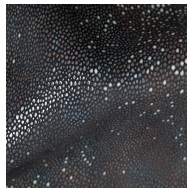
Natural Blue



Glamour Silver



Glamour Red



Blue Moon



Espresso