



LEATHER SINCE 1933

Lucia

Lucia is an intricate and delicate transfer pattern that resembles the geometric shape of lace. This is an ornate transfer that adds a soft, glamorous and modern touch to any base color. This is made to order. Production time is 2-3 weeks. Samples are stocked in limited quantity and may not be immediately available.

FEATURES

- Delicate transfer pattern resembling lace
- Soft, glamorous, and modern look
- Satin Suede base leather

COUNTRY OF ORIGIN

Spain

TANNAGE

Chrome

FINISH

Suede

CHARACTER

Suede

HIDE TYPE

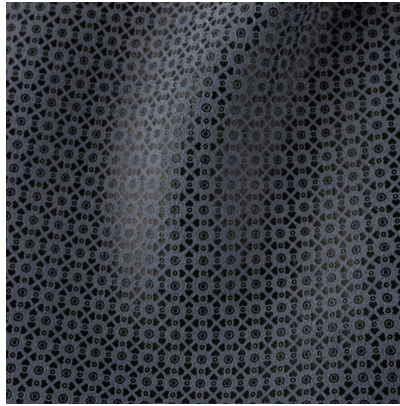
Bovine

CONFIGURATION

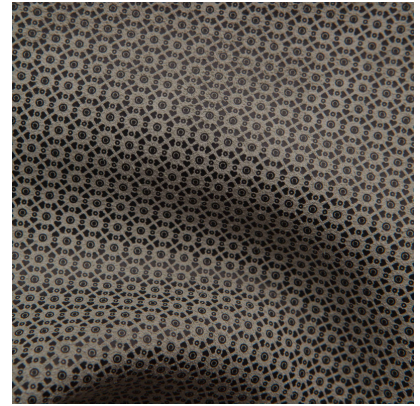
Double Butt

TESTING

Upon Request Only



Adriatic Super Black Matte



Stormy Super Black Matte