



LEATHER SINCE 1933

Lincoln

Crafted in Italy from premium quality hides, Lincoln's tannage features pure aniline dyes that saturate the hides with rich color. Hides are then slightly buffed to help optimize color consistency across the hides. After a gentle milling overnight, they are individually polished to achieve a hand that is exceptionally soft and translucent. The end result is a luxurious leather that exudes modern elegance and timeless appeal.

FEATURES

- Aniline dyed
- Improved color consistency
- Exceptionally soft hand

COUNTRY OF ORIGIN

Italy

TANNAGE

Chrome

FINISH

Aniline Plus

CHARACTER

Smooth

GRAIN

Corrected

HIDE TYPE

Bovine

CONFIGURATION

Whole Hide

TESTING

Upon Request Only

CERTIFICATIONS

Clean Air Gold

Declare

Environmental Product Declaration



Taupe



Ivory



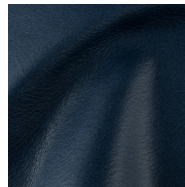
Ash



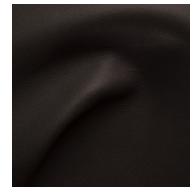
Nut



Ghost



Pool



Carbon