



LEATHER SINCE 1933

# Lattice Cube

The Lattice Cube collection pays a playful homage to the geometric patterns favored during the midcentury. Each modular square is embossed on Nubuck leather, creating a multidimensional effect across the hide. View Plate Diagram

## FEATURES

- - Classic aniline nubuck
- - Soft, subtle color palette
- - Water resistant properties

## COUNTRY OF ORIGIN

Italy

## TANNAGE

Chrome

## FINISH

Nubuck

## CHARACTER

Nubuck

## GRAIN

Top Grain

## HIDE TYPE

Bovine

## CONFIGURATION

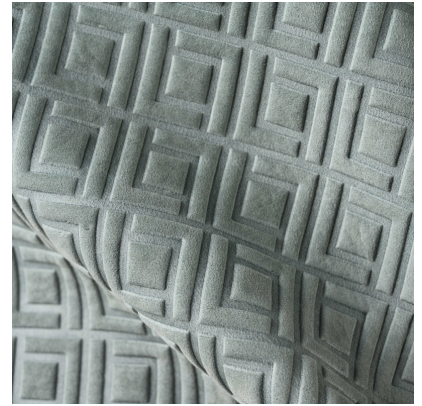
Whole Hide

## TESTING

Contact Customer Care



Cottswald Camel



Cottswald Slate Grey



Cottswald Habanero