



LEATHER SINCE 1933

Jot

Our Jot Collection features an array of miniature metallic squares with a grey and blue motif across the surface of our Satin Suede base. Dynamic metallic transfer patterns on a soft satin suede base create a stunning visual effect, injecting elements of dimension and texture that accentuate the leather’s tactile qualities and luxurious nap. The end result is leather with enhanced durability that draws you in with its lavish glamour and modern elegance. This is made to order. Production time is 2-3 weeks. Samples are stocked in limited quantity and may not be immediately available.

FEATURES

- Dynamic metallic transfer patterns
- Soft satin suede base
- Studding visual effect
- Enhanced durability

COUNTRY OF ORIGIN

Spain

TANNAGE

Chrome

FINISH

Suede

CHARACTER

Suede

HIDE TYPE

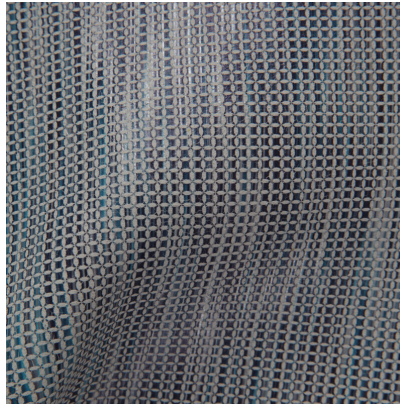
Bovine

CONFIGURATION

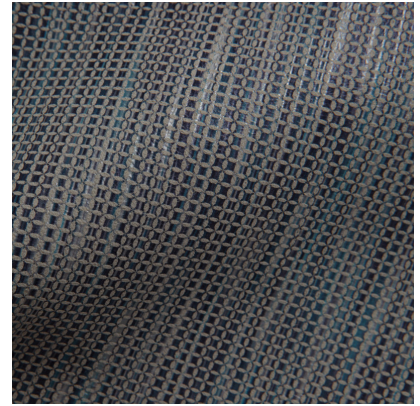
Double Butt

TESTING

Upon Request Only



White Blue Metallic



Cream Blue Metallic



Black Blue Metallic