



LEATHER SINCE 1933

Jefferson

Crafted in South America and available in four colors, Jefferson is a traditional belting leather with a firm hand and a slight polish for designers looking for a heavier weight option. Hides are side cuts from butt to shoulder with no belly area and will average 3.8-4.0 mm in weight and 25 square feet in size.

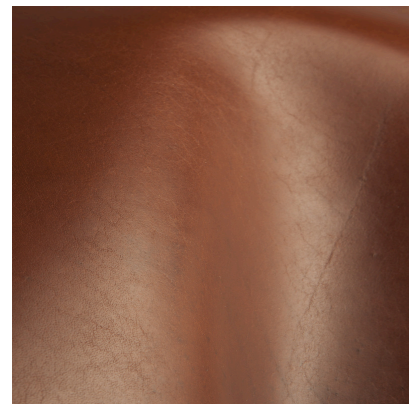
Minimum order quantities apply.

Contact Us: Phone: 800.737.0169

Email: hello@mooreandgiles.com or use our chat feature below



Black



Red Clay

FEATURES

- Vegetable tanned leather featuring a lightly polished, tight grain, and firm hand
- Natural characteristics will be visible

COUNTRY OF ORIGIN

Brazil

TANNAGE

Vegetable

FINISH

Semi-Aniline

CHARACTER

Smooth

GRAIN

Full Grain

HIDE TYPE

Bovine

CONFIGURATION

Half Hide

TESTING

CA-117, NFPA-260