

Herringbone

The Herringbone collection features a chic metallic herringbone pattern on our Satin Suede base. Dynamic metallic transfer patterns on a soft satin suede base create a stunning visual effect, injecting elements of dimension and texture that accentuate the leather's tactile qualities and luxurious nap. The end result is leather with enhanced durability that draws you in with its lavish glamour and modern elegance. This is made to order. Production time is 2-3 weeks. Samples are stocked in limited quantity and may not be immediately available.

FEATURES

- Metallic herringbone transfer pattern
- Satin Suede base

COUNTRY OF ORIGIN

Spain

TANNAGE

Chrome

FINISH

Suede

CHARACTER

Suede

GRAIN

Split

HIDE TYPE

Bovine

CONFIGURATION

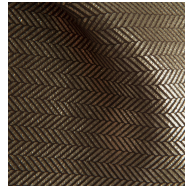
Double Butt

TESTING

Upon Request Only



Black Pearl



Espresso Antique
Gold



Cream Glaze



Espresso Black Pearl



Smoke Hammered
Silver



Cream Pearl