



LEATHER SINCE 1933

# Harlowe

Our Harlowe embossing was designed to mimic a braided weave. This pattern runs horizontally across the hide and gives off a beautiful illusion on any base.

## FEATURES

- Braided pattern
- Horizontal pattern direction

## COUNTRY OF ORIGIN

Spain

## TANNAGE

Chrome

## FINISH

Suede

## CHARACTER

Suede

## GRAIN

Split

## HIDE TYPE

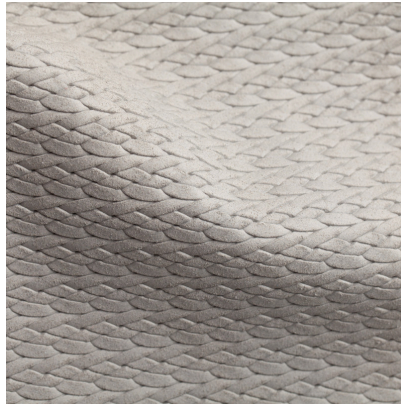
Bovine

## CONFIGURATION

Double Butt

## TESTING

Contact Customer Care



Stormy



Cream