



LEATHER SINCE 1933

# Harlequin

A dynamically dressed-up quilted diamond pattern available on our Satin Suede collection.

## FEATURES

- Quilted diamond pattern
- Satin Suede base leather

## COUNTRY OF ORIGIN

Spain

## TANNAGE

Chrome

## FINISH

Suede

## CHARACTER

Suede

## HIDE TYPE

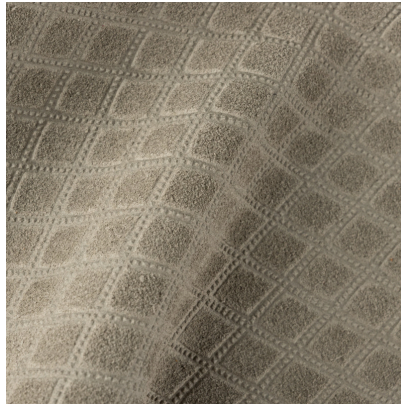
Bovine

## CONFIGURATION

Double Butt

## TESTING

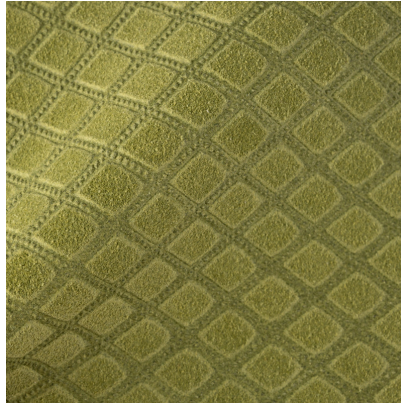
Upon Request Only



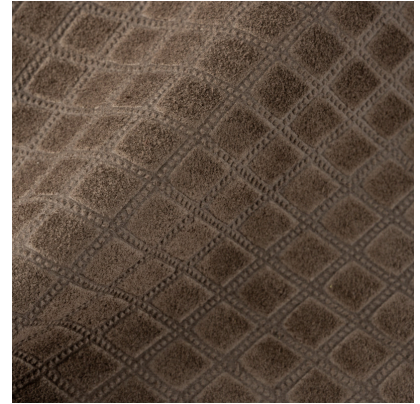
Stormy



Cream



Pistache



Smoke