



LEATHER SINCE 1933

# Fine Corduroy

The Fine Corduroy Collection features fine metallic lines across the surface of our Satin Suede base that mimics the appearance of fine corduroy. Dynamic metallic transfer patterns on a soft satin suede base create a stunning visual effect, injecting elements of dimension and texture that accentuate the leather’s tactile qualities and luxurious nap. The end result is leather with enhanced durability that draws you in with its lavish glamour and modern elegance. This article is Special Order only. This is made to order. Production time is 2-3 weeks. Samples are stocked in limited quantity and may not be immediately available.

## FEATURES

- Metallic corduroy pattern
- Satin Suede base

## COUNTRY OF ORIGIN

Spain

## TANNAGE

Chrome

## FINISH

Suede

## CHARACTER

Suede

## GRAIN

Split

## HIDE TYPE

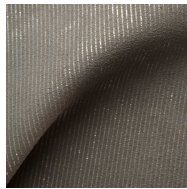
Bovine

## CONFIGURATION

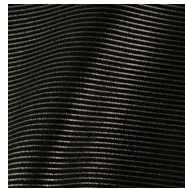
Double Butt

## TESTING

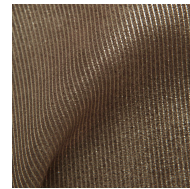
CA-117, NFPA-260



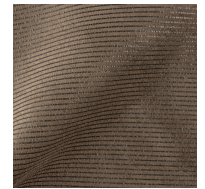
Stormy Hammered Silver



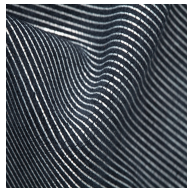
Black Greycloud Super Matte



Espresso Antique Gold



Smoke Greycloud Super Matte



Blue Moon Hammered Silver