



LEATHER SINCE 1933

Dovetail

The Dovetail collection features a simple yet elegant dovetail design on our Satin Suede base. Dynamic metallic transfer patterns on a soft satin suede base create a stunning visual effect, injecting elements of dimension and texture that accentuate the leather's tactile qualities and luxurious nap. The end result is leather with enhanced durability that draws you in with its lavish glamour and modern elegance. This is made to order. Production time is 2-3 weeks. Samples are stocked in limited quantity and may not be immediately available.

FEATURES

- Simple metallic pattern
- Satin Suede base

COUNTRY OF ORIGIN

Spain

TANNAGE

Chrome

FINISH

Suede

CHARACTER

Suede

GRAIN

Split

HIDE TYPE

Bovine

CONFIGURATION

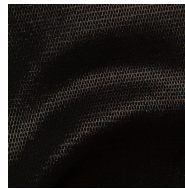
Double Butt

TESTING

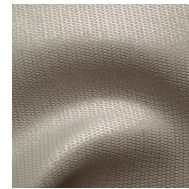
Upon Request Only



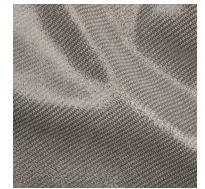
Cream Zinc



Black Anthracite



Cream Iced



Stormy Anthracite



Stormy Hammered
Silver



Natural Copper
Bronze