



LEATHER SINCE 1933

Dot Cascade

A classic diamond embossing on a soft and drapery aniline suede with a beautiful tracking effect.

FEATURES

- Diamond embossing
- Satin suede base

COUNTRY OF ORIGIN

Spain

TANNAGE

Chrome

FINISH

Suede

CHARACTER

Suede

HIDE TYPE

Bovine

CONFIGURATION

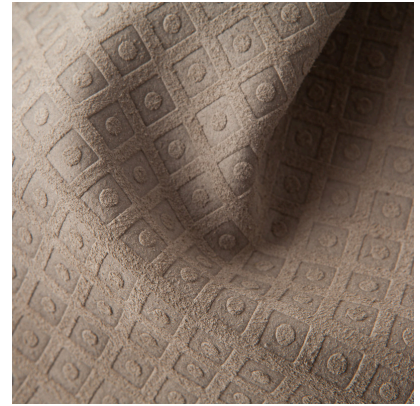
Double Butt

TESTING

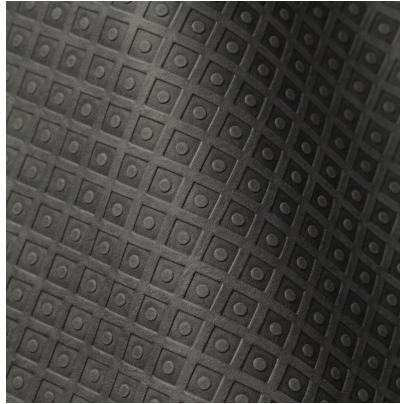
Upon Request Only



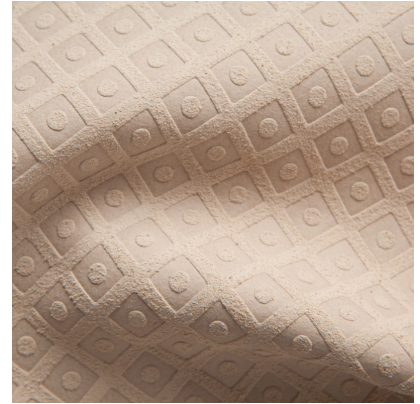
Pistache



Smoke



Stormy



Cream