



LEATHER SINCE 1933

Diamonds Are Forever

Diamonds are Forever is a classic trellage pattern embossing that allows light to play dramatically across the leather. It is simultaneously classic and contemporary, and the diamonds are designed to work beautifully both horizontally and vertically. The cabinets and boxes of Jean Michel Frank, made in the 1930's, offered inspiration for this lustrous dimensional interpretation. This is made to order. Production time is 2-3 weeks. Samples are stocked in limited quantity and may not be immediately available.

FEATURES

- Hide is sided for each half up to 25 sf

COUNTRY OF ORIGIN

Italy

TANNAGE

Chrome

FINISH

Aniline Plus

CHARACTER

Embossed

GRAIN

Full Grain

HIDE TYPE

Bovine

CONFIGURATION

Half Hide

TESTING

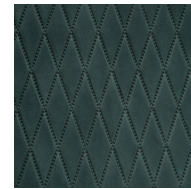
CA-117, NFPA-260



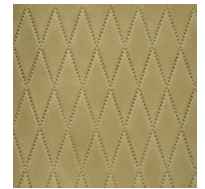
Virtue Shadow



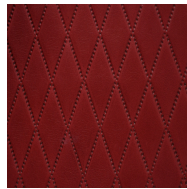
Virtue Fossil



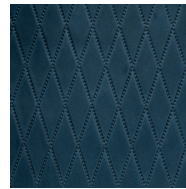
Virtue Aegean



Virtue Flaxen



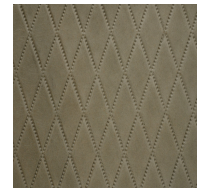
Virtue Cranberry



Virtue Lagoon



Virtue Chestnut



Virtue Smoke