



LEATHER SINCE 1933

Dakota

Designed in Thailand on European raw material hand-selected for its inherent markings and characteristics, Dakota features an innovative staining process that uses waxes instead of dyes to achieve a naturally worn-in aesthetic. These waxes are meticulously applied by hand in layers to impart the leather with a more authentically aged appearance. The unique hand staining effect will not pull up during upholstery, making Dakota an ideal vintage-inspired option to enhance interiors.

FEATURES

- Aniline leather featuring a lightly polished, translucent surface
- Vegetable retanned for a robust hand
- Hand stained to ensure authentic appearance and patina
- Vibrant color palette

COUNTRY OF ORIGIN

Thailand

TANNAGE

Chrome

FINISH

Aniline Plus

CHARACTER

Smooth

GRAIN

Full Grain

HIDE TYPE

Bovine

CONFIGURATION

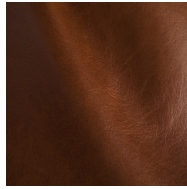
Whole Hide

TESTING

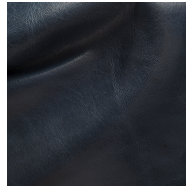
CA-117

CERTIFICATIONS

Clean Air Gold Certification



Tobacco Brown



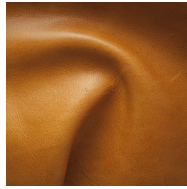
Sapphire



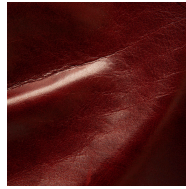
Fossil



Evergreen



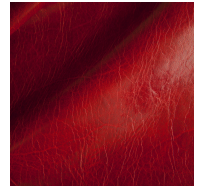
Modern Saddle



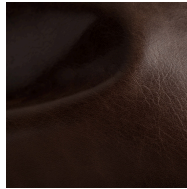
Wine



Molasses



Crimson



Charcoal



Putty



Moss



Black



Dove