



LEATHER SINCE 1933

Champagne Fizz

Our Champagne Fizz collection features a transfer pattern on our Satin Suede base that is reminiscent of champagne bubbles. A dynamic metallic transfer that creates a stunning visual effect, injecting elements of dimension and texture that accentuate the leather's tactile qualities and luxurious nap. The end result is leather with enhanced durability that draws you in with its lavish glamour and modern elegance. This article is Special Order only. This is made to order. Production time is 2-3 weeks. Samples are stocked in limited quantity and may not be immediately available.

FEATURES

- Bubble transfer pattern on soft, drapey aniline suede

COUNTRY OF ORIGIN

Spain

TANNAGE

Chrome

FINISH

Suede

CHARACTER

Suede

GRAIN

Split

HIDE TYPE

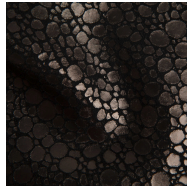
Bovine

CONFIGURATION

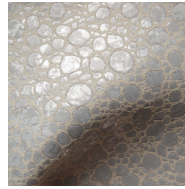
Double Butt

TESTING

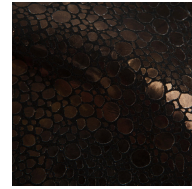
Upon Request Only



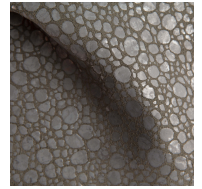
Black Anthracite
Matte



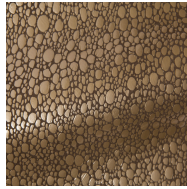
Cream Hammered
Silver



Black Multi Bronze



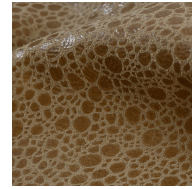
Stormy Hammered
Silver



Smoke Taupe Pearl



Espresso Zinc



Natural Glaze