



LEATHER SINCE 1933

Chainmaille

Chainmaille is an intricate embossing that forms a surface that is both classic and modern. This is made to order. Production time is 2-3 weeks. Samples are stocked in limited quantity and may not be immediately available.

FEATURES

- Hide is sided for each half up to 25 sf

COUNTRY OF ORIGIN

Italy

TANNAGE

Chrome

FINISH

Aniline Plus

CHARACTER

Embossed

GRAIN

Full Grain

HIDE TYPE

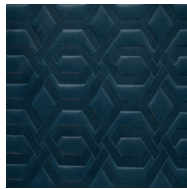
Bovine

CONFIGURATION

Half Hide

TESTING

Upon Request Only



Virtue Lagoon



Virtue Smoke



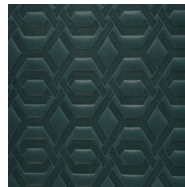
Virtue Chestnut



Virtue Flaxen



Virtue Shadow



Virtue Aegean



Virtue Fossil



Virtue Cranberry