



LEATHER SINCE 1933

Castello

Castello is crafted from European hides and tanned in the northern Italy. We love this leather for its uniformity in color and finish, with minimalistic hair-cell details for a bit of visual texture. Castello has a smooth hand and matte finish, with limitless application options.

FEATURES

- Smooth hand and feel
- Small hair cell print
- Color consistency throughout entire hide

COUNTRY OF ORIGIN

Italy

TANNAGE

Chrome

FINISH

Pigmented

CHARACTER

Embossed

GRAIN

Full Grain

HIDE TYPE

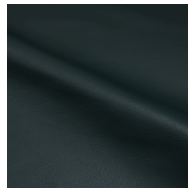
Bovine

CONFIGURATION

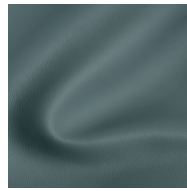
Whole Hide

TESTING

Contact Customer Care



Hunter



Ocean



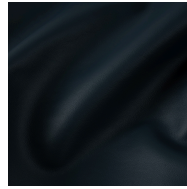
Jam



Cocoa



Cloud



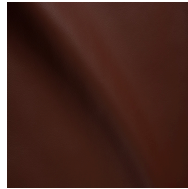
Midnight



Clay



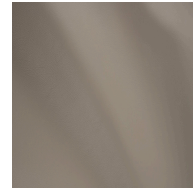
Mushroom



Plum



Bianco



Beige



Terra



Taupe



Mouse



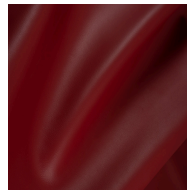
Rose



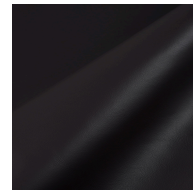
Black



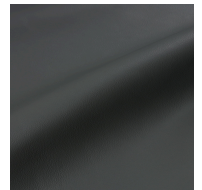
Stone



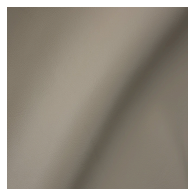
Auburn



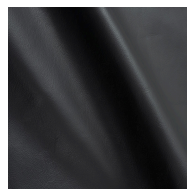
Wineberry



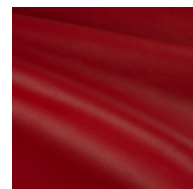
Slate



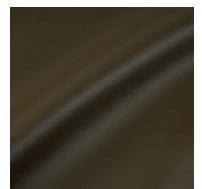
Latte



Pewter



Ruby



Cypress



Crema