

Burnham

Casual elegance describes this illustrious leather from New Zealand's North Island. An aniline leather dressed with wax and oil that is then milled and polished. The tanner's artistry is seen in the burnished, polished surface that complements and contrasts with a velvety texture that showcases a luxurious tracking effect that will become more visually appealing with use and wear. The leather has a cool "drapey" hand that tailors beautifully on a variety of frames.

FEATURES

- Aniline nubuck leather
- Waxed, oiled, and milled to achieve soft, drapey hand
- Exhibits worn-in aesthetic
- Natural characteristics will be visible

AVG. HIDE SIZE

35 - 40 sq ft

AVG. THICKNESS

1.2-1.4mm

COUNTRY OF ORIGIN

New Zealand

TANNAGE

Chrome

FINISH

Nubuck

CHARACTER

Tumbled

GRAIN

Nubuck

HIDE TYPE

Bovine

CONFIGURATION

Whole Hide

TESTING

CA-117, NFPA-260, ASTM D 2211 Elongation of Leather, ASTM D 4157-13 Wyzenbeek

CERTIFICATIONS

Declare Red List Free

Clean Air Gold Certification



Sunflower



Parchment



Beige



Cadet Blue



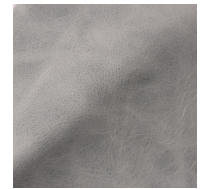
Marmalade



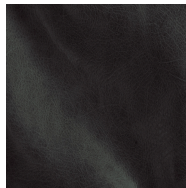
Sea Salt



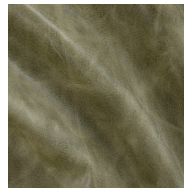
Sycamore



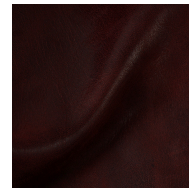
Sky



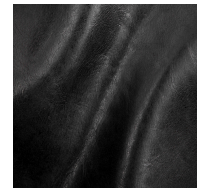
Shale



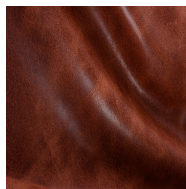
Seafoam



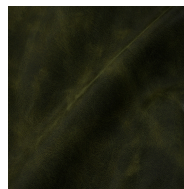
Garnet



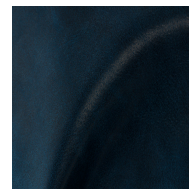
Black



Plum



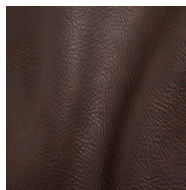
Moss



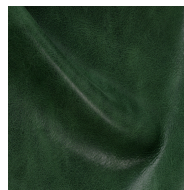
Sailboat



Slate



Molasses



Juniper