



LEATHER SINCE 1933

# Brompton

Crafted at an Italian tannery with over one hundred and fifty years of experience, Brompton is a timeless, aniline plus leather that represents a blending of today's tanning technology with the dedication and skill of artisans spanning multiple generations.

## FEATURES

- Aniline wax pull-up leather
- Exhibits dramatic highs and lows
- Hot wax tannage technique
- Natural characteristics will be visible

## COUNTRY OF ORIGIN

Italy

## TANNAGE

Chrome

## FINISH

Aniline Plus

## CHARACTER

Smooth

## GRAIN

Full Grain

## HIDE TYPE

Bovine

## CONFIGURATION

Whole Hide

## TESTING

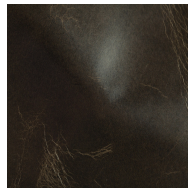
CA-117, NFPA-260, ASTM D 2211 Elongation of Leather, CAN/ULC-S102 2S Surface Burn of Building Materials and Assemblies, ASTM D 4157-13 Wyzenbeek

## CERTIFICATIONS

Clean Air Gold

Declare

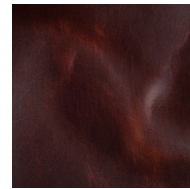
Environmental Product Declaration



Spanish Moss



Wolf



Walnut



Black and Blue



Brown



Black



Vintage



Chestnut