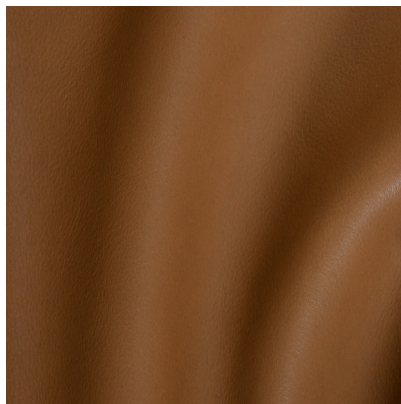




LEATHER SINCE 1933

# Branson

A small pebble natural beauty with remarkably uniform pigmentation and notable durability, Branson is semi-aniline leather that's been mastered at a South American tannery and is an optimal selection for numerous applications.



Beige

## FEATURES

- Subtle pebble grain, natural color variation throughout the hide

## COUNTRY OF ORIGIN

South America

## TANNAGE

Chrome

## FINISH

Aniline Plus

## CHARACTER

Small Pebble

## GRAIN

Full Grain

## HIDE TYPE

Bovine

## CONFIGURATION

Whole Hide

## TESTING

Contact Customer Care