



LEATHER SINCE 1933

Boa

The Boa collection features an exotic reptile-inspired transfer on our Satin Suede base. The dynamic pattern creates a stunning visual effect on the suede's soft surface, injecting elements of dimension and texture that accentuate the leather's tactile qualities and luxurious nap. The end result is a leather with enhanced durability that draws you in with its lavish glamour and modern elegance. This is made to order. Production time is 2-3 weeks. Samples are stocked in limited quantity and may not be immediately available.

FEATURES

- A soft drapery aniline suede
- Extensive color palette
- Luxurious tracking effect
- Water resistant properties

COUNTRY OF ORIGIN

Spain

TANNAGE

Chrome

FINISH

Suede

CHARACTER

Suede

GRAIN

Split

HIDE TYPE

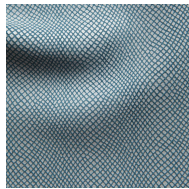
Bovine

CONFIGURATION

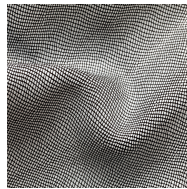
Double Butt

TESTING

CA-117, NFPA-260



Pacific White



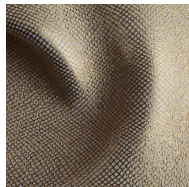
Black White



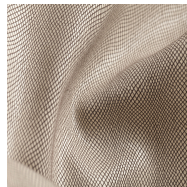
Cream White



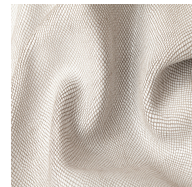
Blue Moon Bone



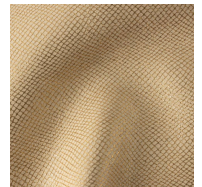
Glamour White



Smoke Bone



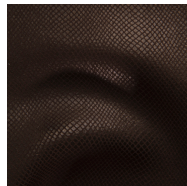
Cream Bone



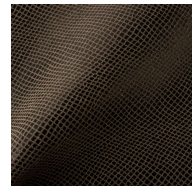
Glamour Bone



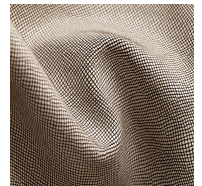
Natural Antique Gold Matte



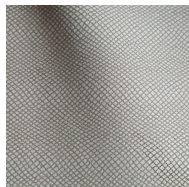
Chocolate Bronze Pearl



Smoke Black Matte



Espresso Bone



Stormy White