



# Acadia

Designed in Italy on European raw material, Acadia is a supple, semi-aniline leather with a protective finish that exudes a more natural aesthetic. Available in a rich and vibrant color palette, it offers designers more uniform color consistency and scratch resistance in high traffic areas. An additional stain treatment enhances this leather's durability and performance, making it an ideal option for modern day applications.

## FEATURES

- Semi-aniline with natural aesthetic
- Rich, vibrant color palette
- Uniform color consistency
- Resistance to scratching
- Stain treatment added for top performance

## AVG. HIDE SIZE

50 sq ft

## AVG. THICKNESS

1.1-1.3mm

## COUNTRY OF ORIGIN

Italy

## TANNAGE

Chrome

## FINISH

Semi-Aniline

## CHARACTER

Smooth

## GRAIN

Corrected

## HIDE TYPE

Bovine

## CONFIGURATION

Whole Hide

## TESTING

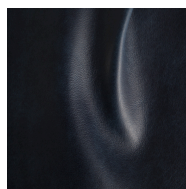
CA-117, NFPA-260, AATCC 8 Colorfastness to Crocking, AATCC 16-3 Lightfastness, ASTM D 2097 Flex Testing of Finish, ASTM D 4157-13 Wyzenbeek, ASTM D 4705 Stitch Tear Strength, ASTM D 2208 Breaking Strength, ASTM D 2211 Elongation of Leather, ASTM D 6182 Flexibility and Adhesion of Leather, ASTM D 6012 Color Transfer, Fluid Resistance

## CERTIFICATIONS

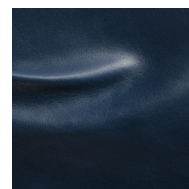
Environmental Product Declaration  
Clean Air Gold Certification



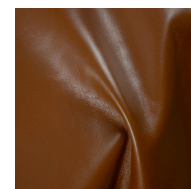
Bisque



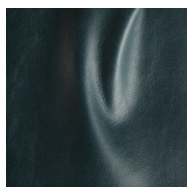
Sapphire



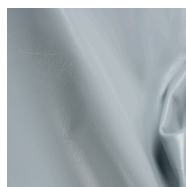
Sailboat



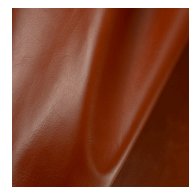
Caramel



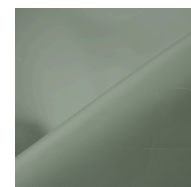
Aegean



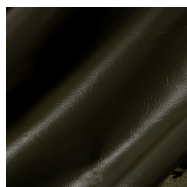
Light Blue



Amber



Sea Glass



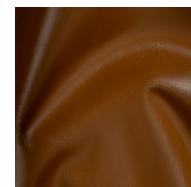
Fatigue



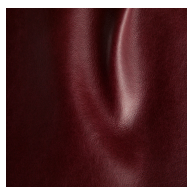
Thunder



Iron



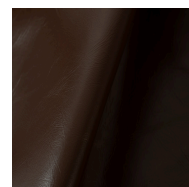
Chestnut



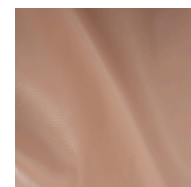
Maraschino



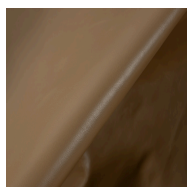
Sunrise



Sequoia



Mauve



Cane